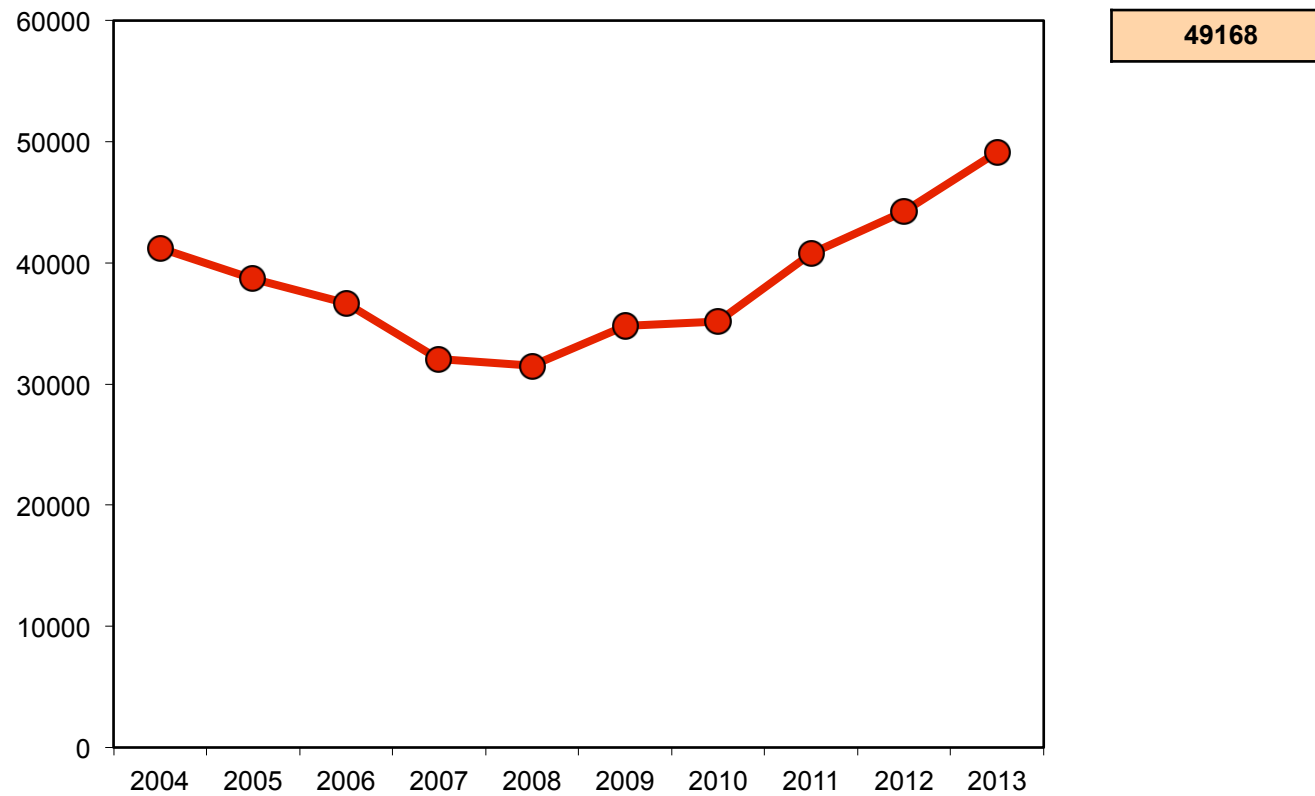
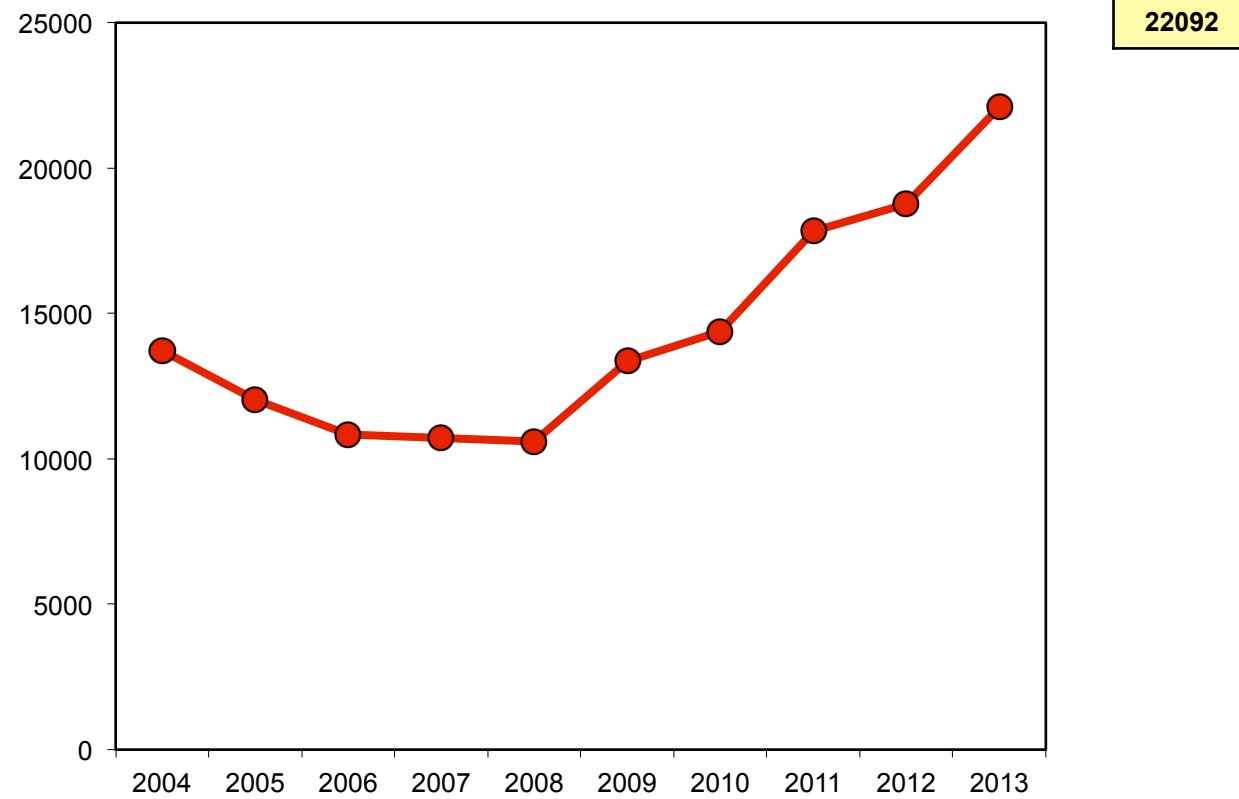


Enquête Effectifs 2013-2014

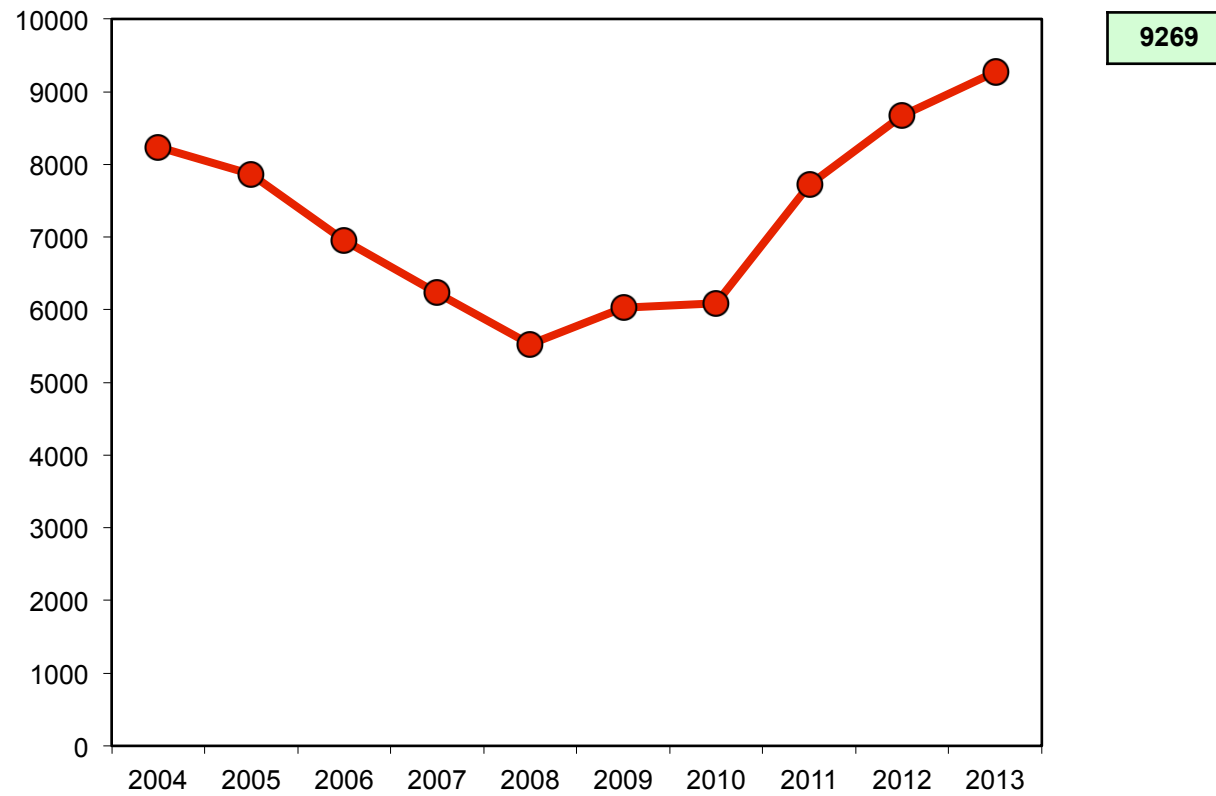
Séminaire C3D – Paris Novembre 2013



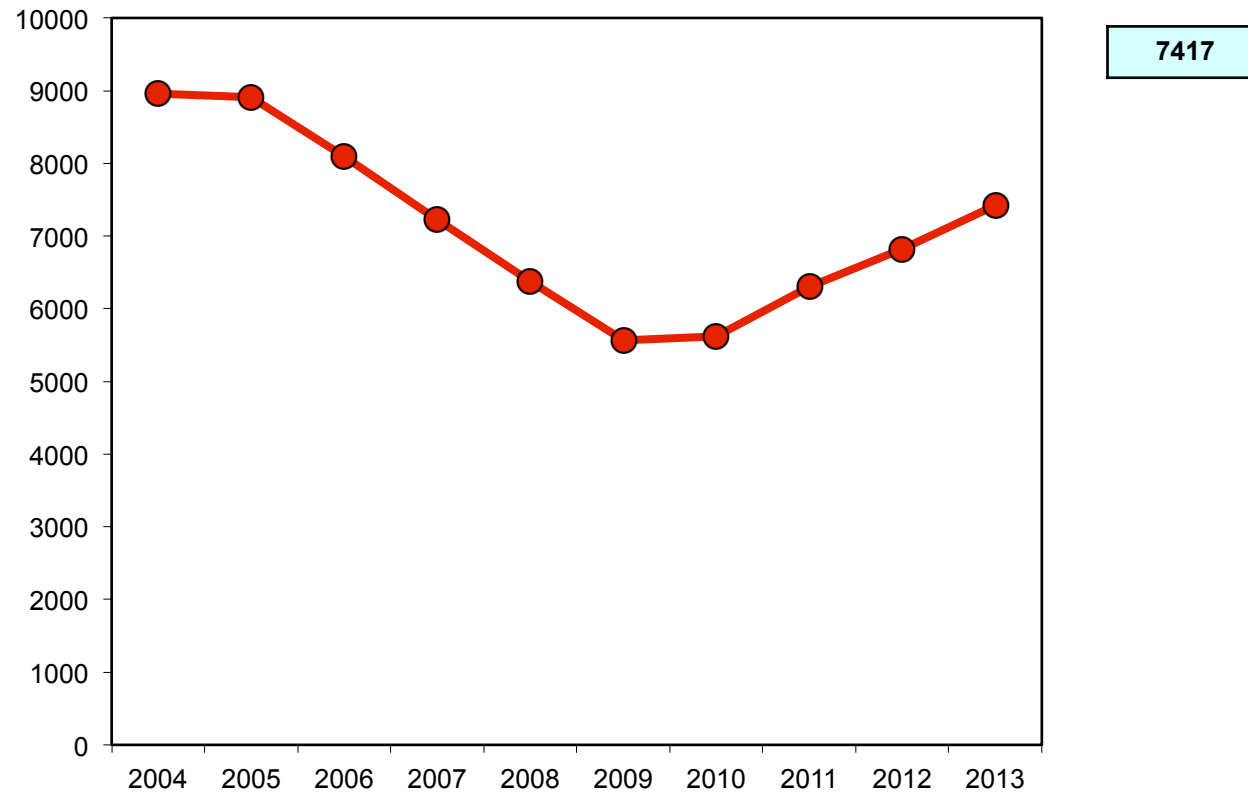
Evolution des effectifs nationaux de la filière STAPS (2004-2013)



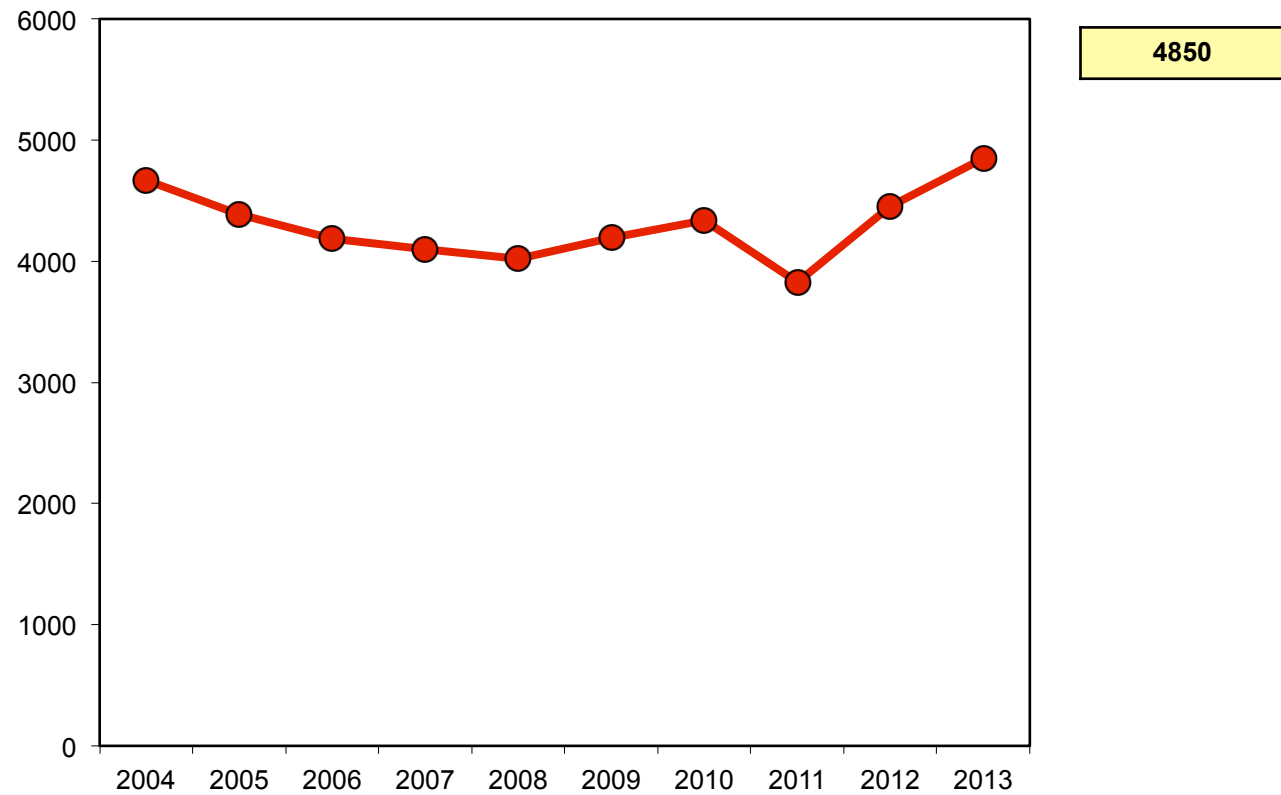
Evolution des effectifs nationaux en Licence 1 (2004-2013)



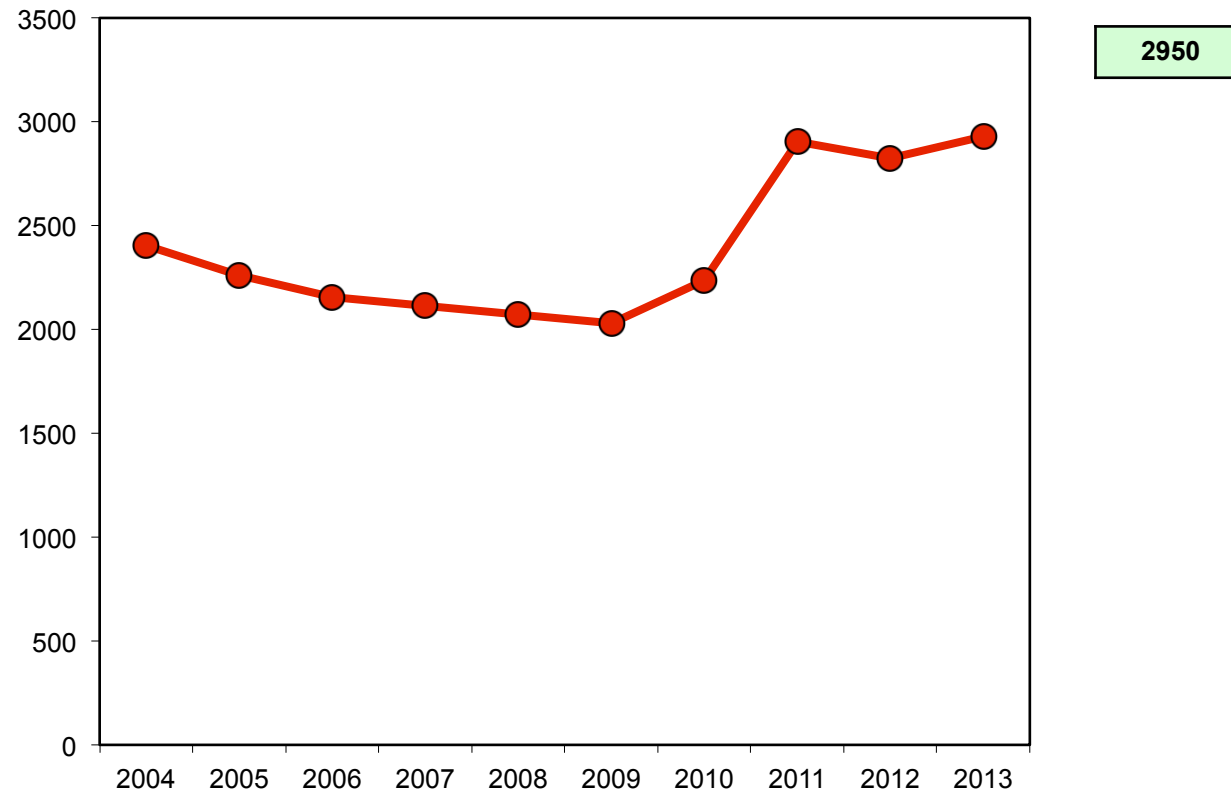
Evolution des effectifs nationaux en Licence 2 (2004-2013)



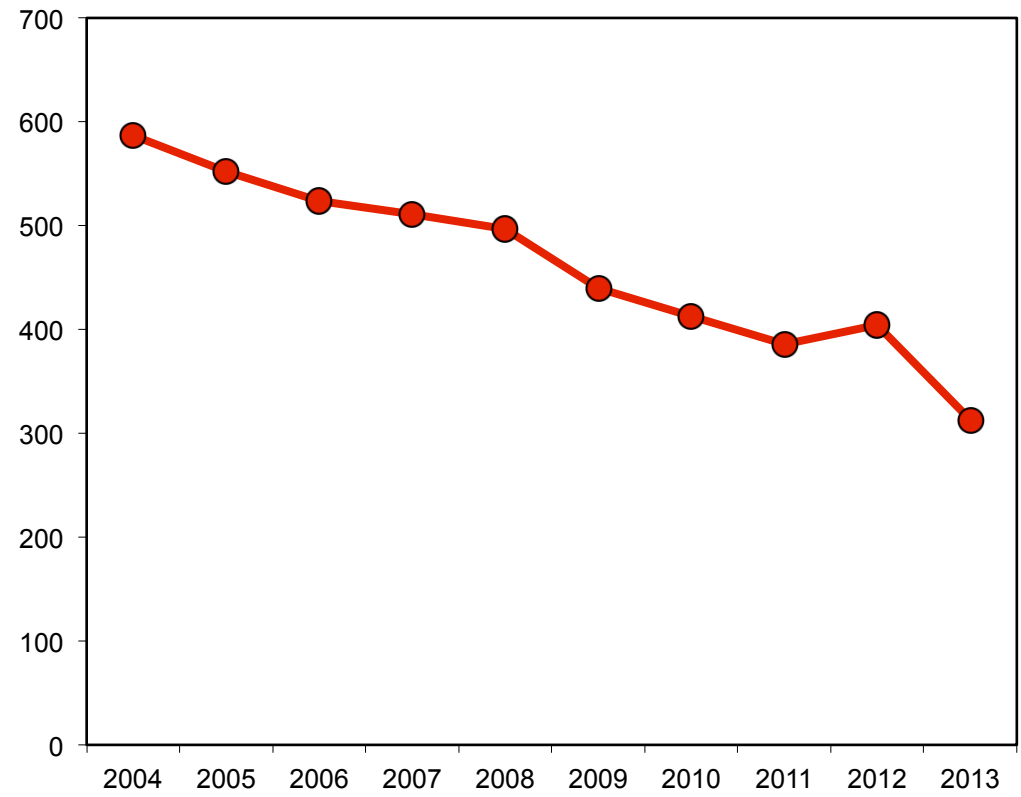
Evolution des effectifs nationaux en Licence 3 (2004-2013)



Evolution des effectifs nationaux en Master 1 (2004-2013)



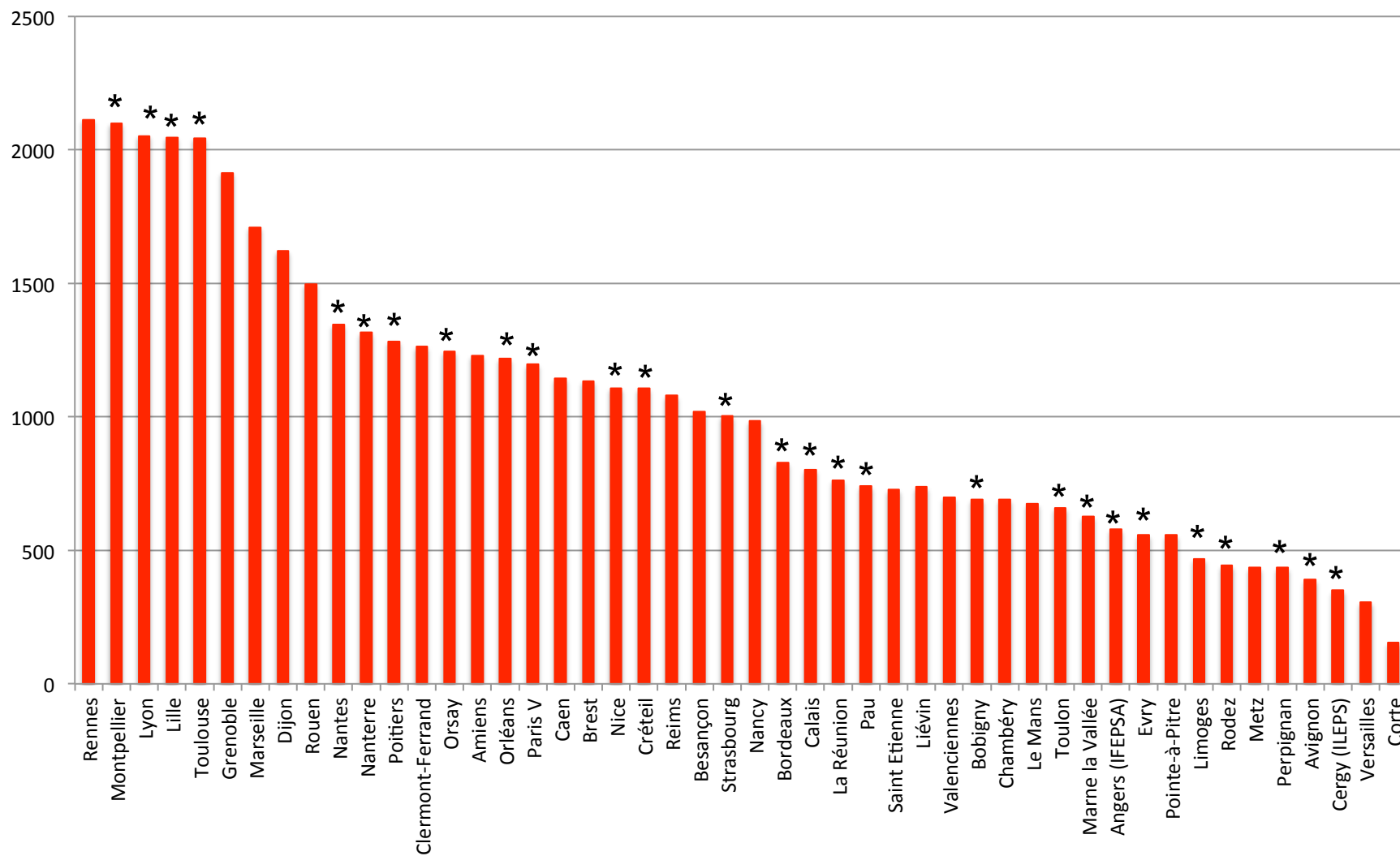
Evolution des effectifs nationaux en Master 2 (2004-2013)



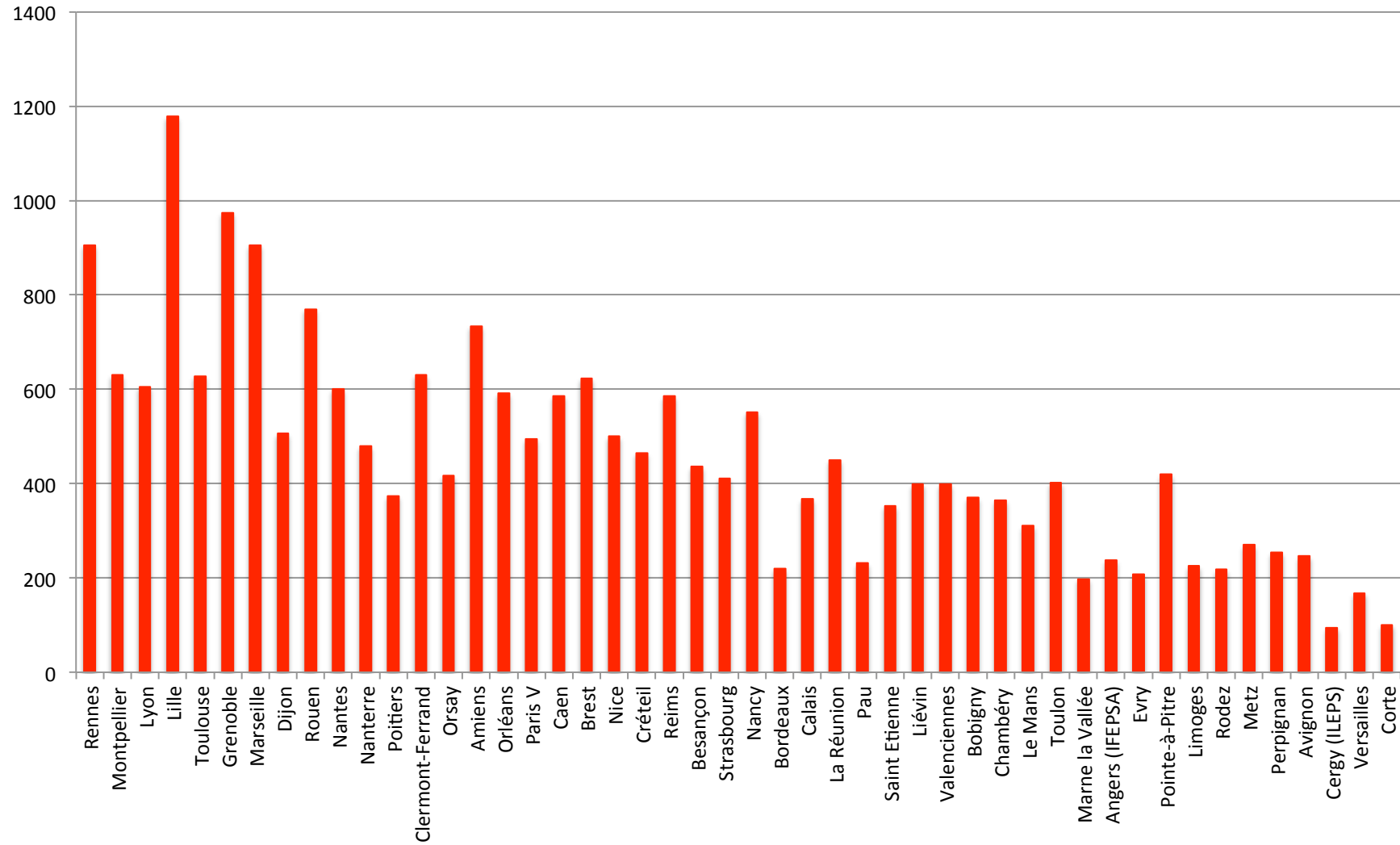
313

Evolution des effectifs nationaux en Doctorat (2004-2013)

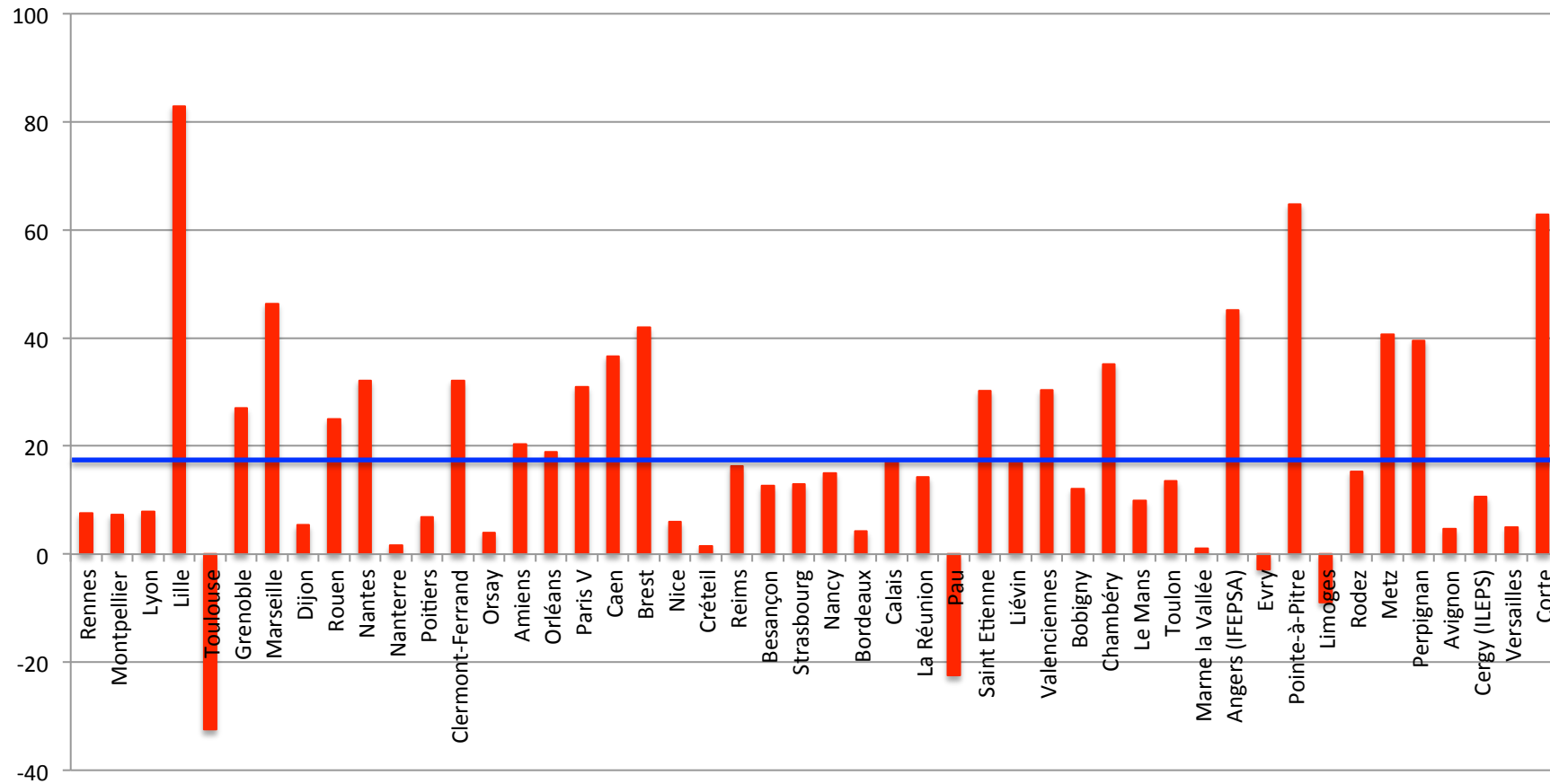
Répartition des effectifs des structures STAPS



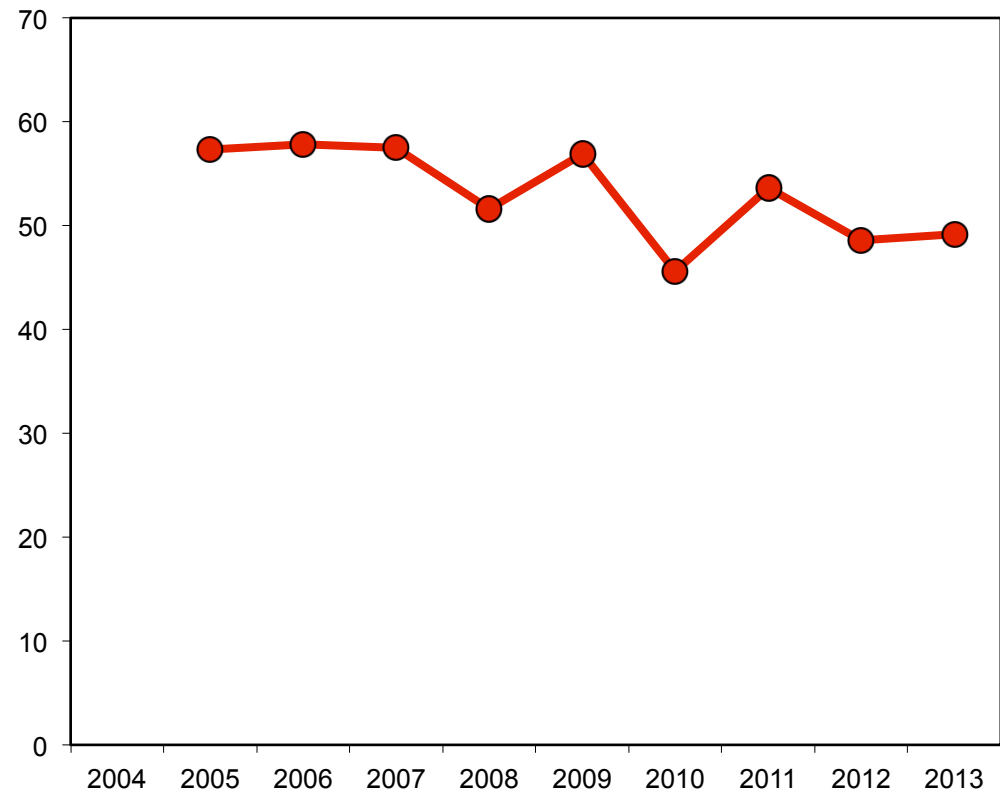
Répartition des effectifs de Licence 1



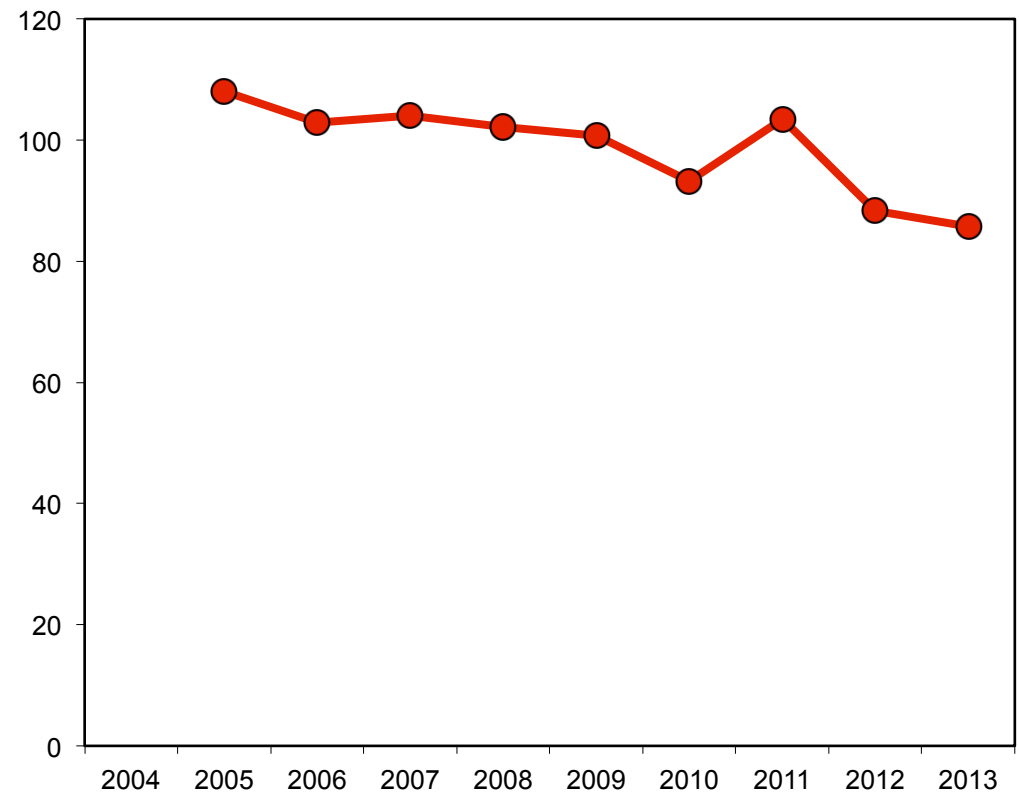
Moyenne 18.4%



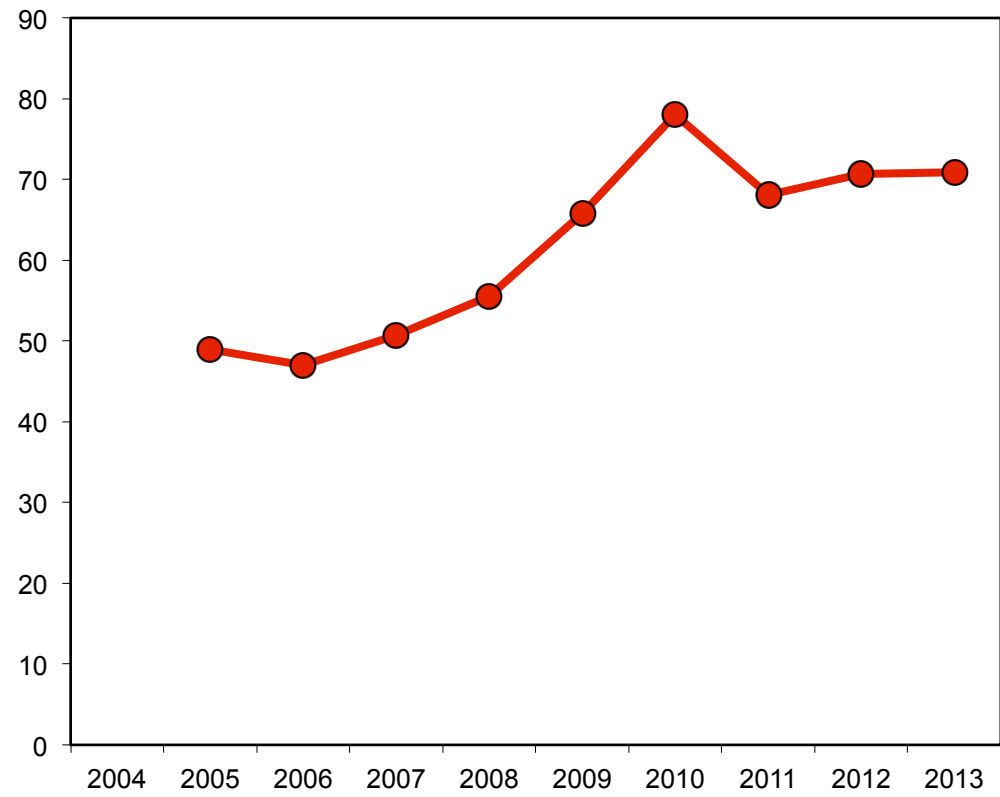
Accroissement en L1 (pourcentage) en fonction de l'effectif de la structure



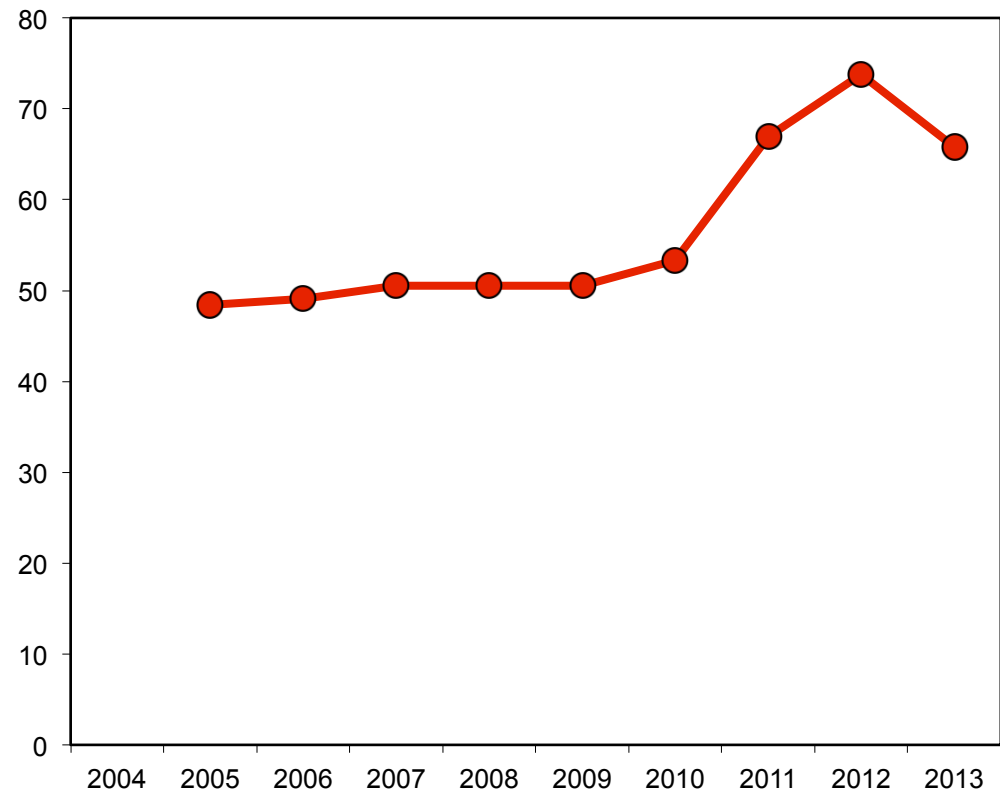
Evolution du ratio national Licence 2/Licence 1(n-1)



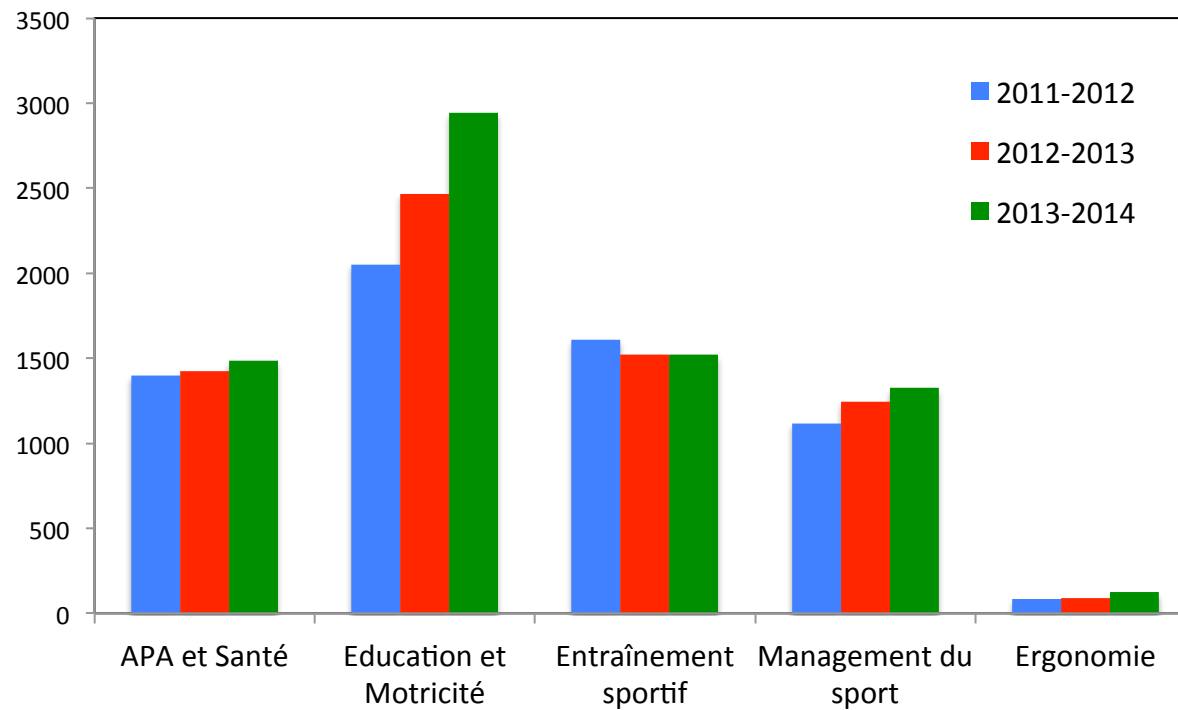
Evolution du ratio national Licence 3/Licence 2(n-1)



Evolution du ratio national Master 1/Licence 3(n-1)

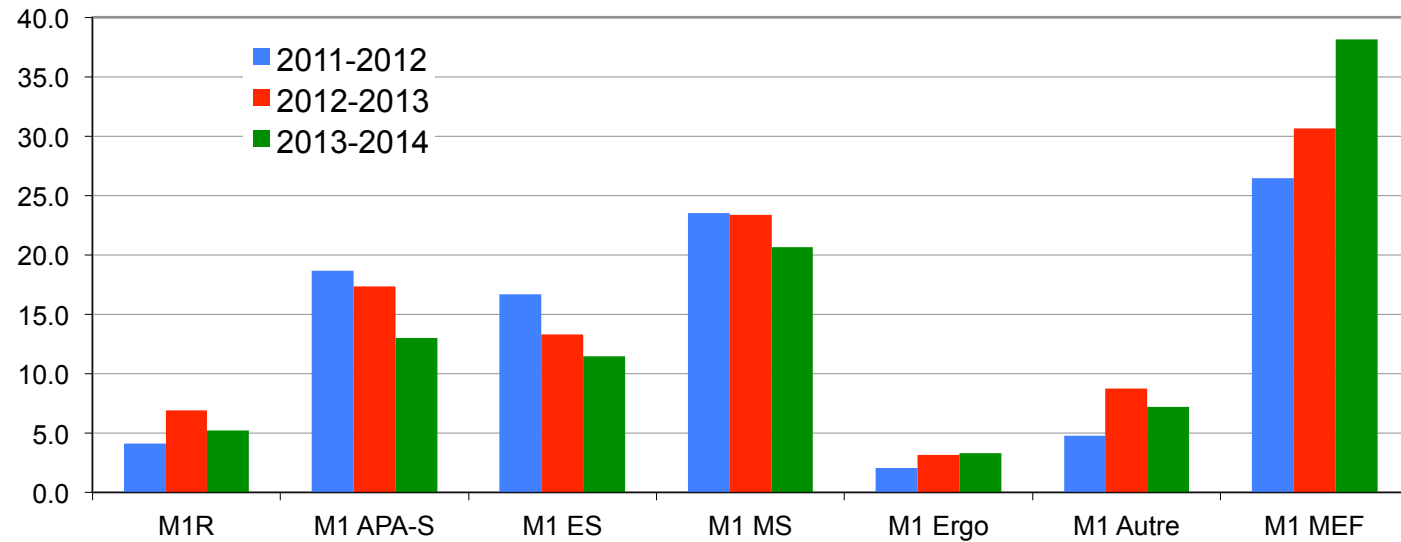


Evolution du ratio national Master 2/Master 1(n-1)

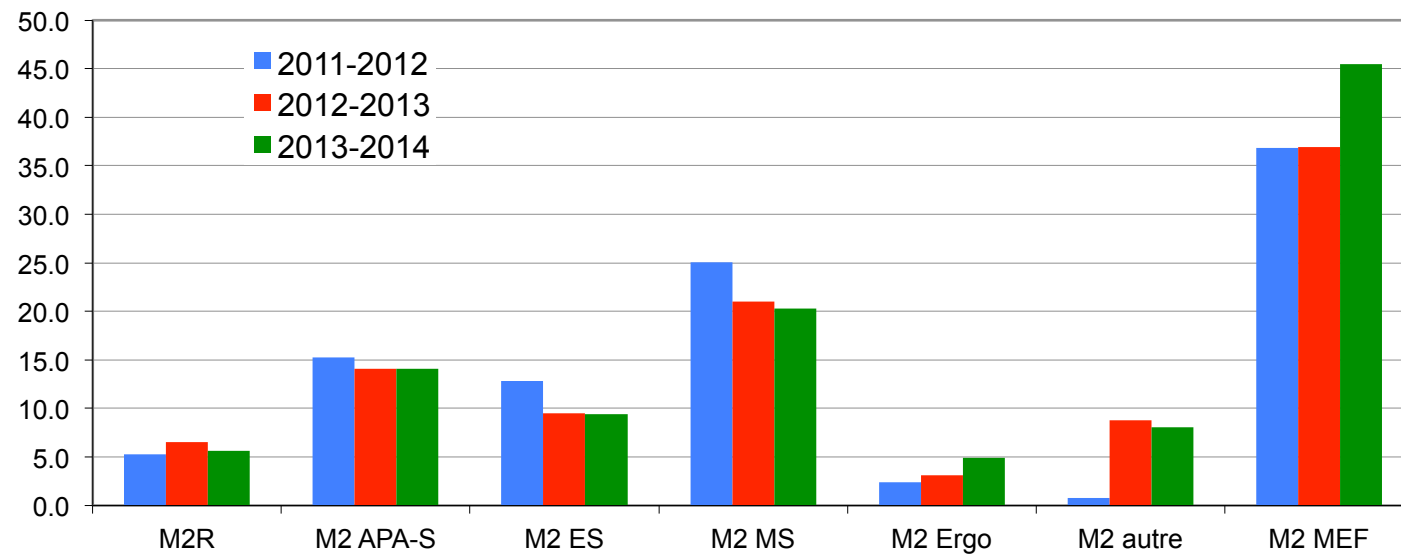


Répartition en effectif des spécialités de Licence 3

Master 1



Master 2



Répartition en pourcentage des spécialités de Master